

Q

How do you transfer still photos into tv paint? Does it need to be done one at a time, can you drag and drop them all at once? (How do you Import an Image Sequence of stills into the TVPaint Timeline?)

A You should drag and drop an image sequence all at one time .

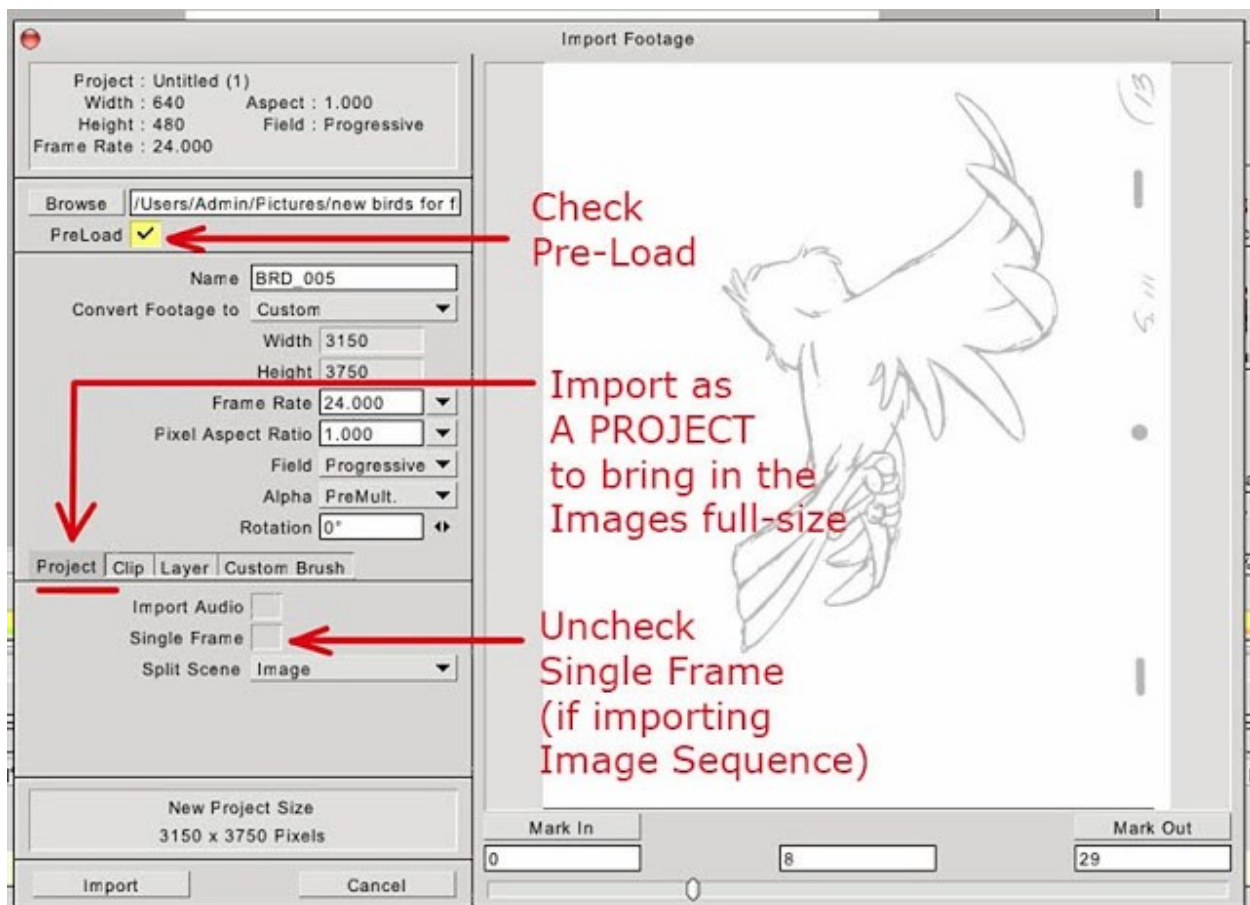
Just make sure that the image sequence of still photos are all saved in one folder and that the naming sequence of the images is in logical order, such as :

IMG\_0001.jpg , IMG\_0002.jpg , IMG\_0003.jpg , IMG\_0004.jpg , IMG\_0005.jpg, etc.

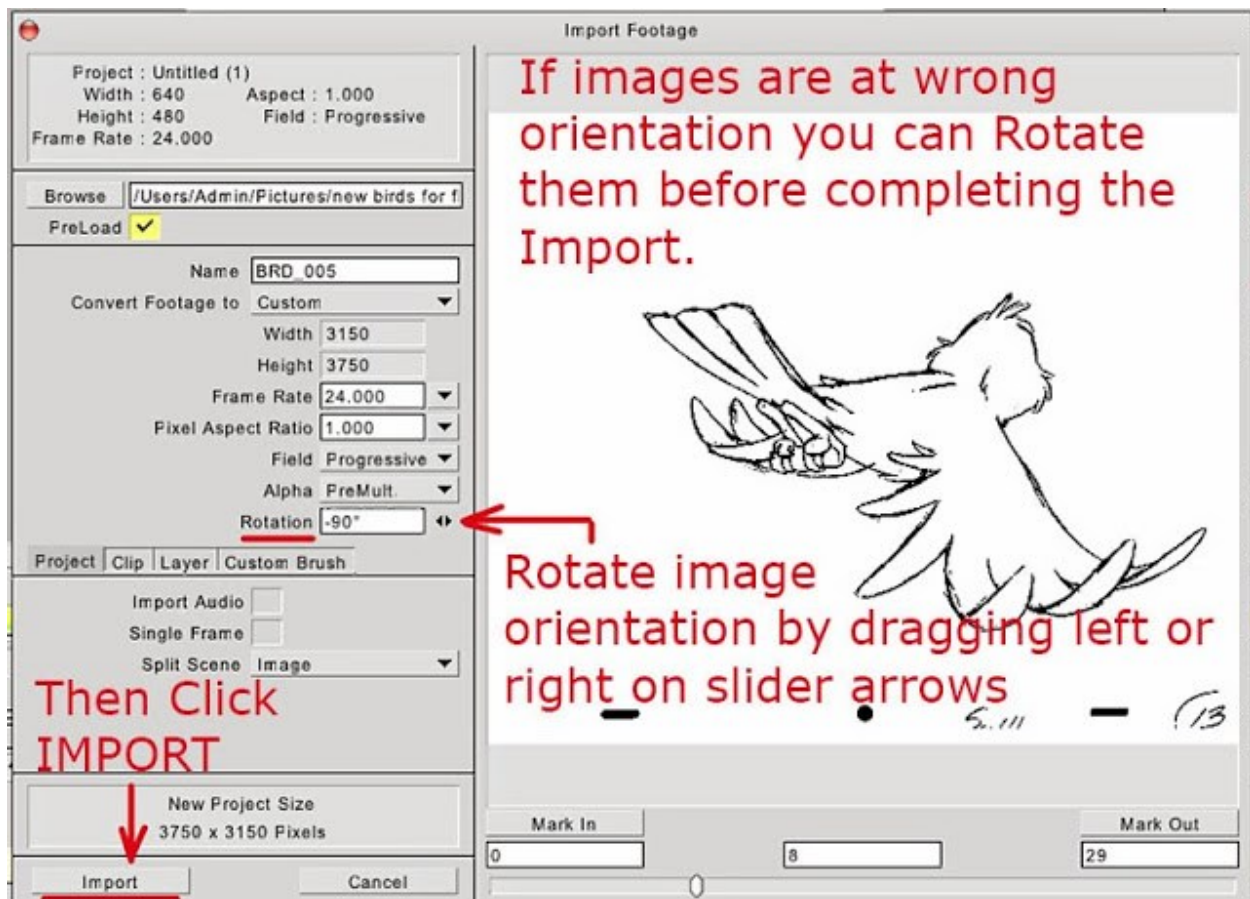
(or it can be IMG\_0001.tif , IMG\_0002.tif , IMG\_0003.tif , IMG\_0004.tif , IMG\_0005.tif, etc, or other common file formats like .png or .bmp )

Drag and drop the first image in the sequence on top of an open TVPaint project window and that will open the IMPORT window. In the Import window make sure the PRELOAD is checked . For an image sequence (as opposed to a single image) uncheck "Single Frame" . You can bring in the images at full size if you choose the option to load them as PROJECT , or you can bring the images into an existing project size (say 640 x 480) by selecting the LAYER tab .

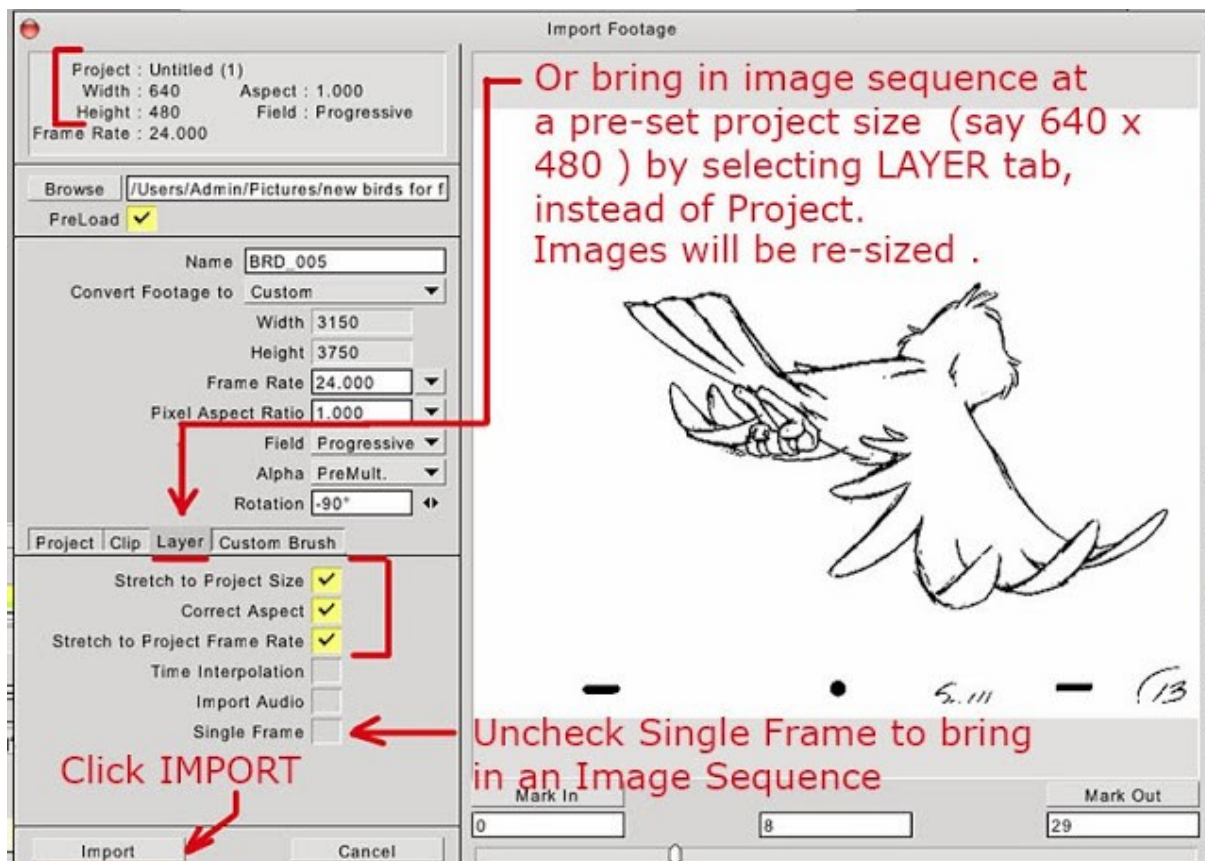
The screen caps below show importing a sequence of animation drawings, but it's the same thing for importing an image sequence of photos.



If your images are at the wrong orientation you can Rotate them by dragging left or right on the slider arrows next to the box that says Rotate (or you can type in the degree of rotation).

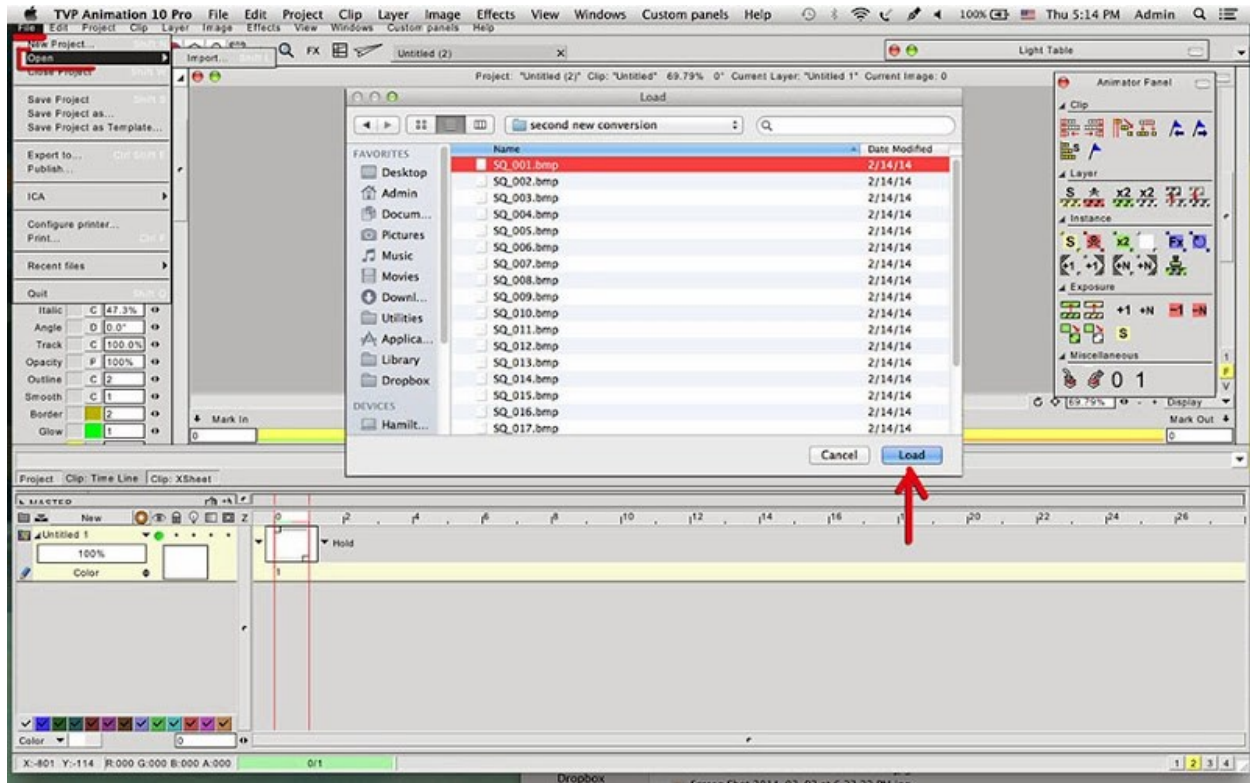


OR if you want the image sequence to be re-sized to a pre-set project size (say 640 x 480) you can select the LAYER tab and the images will be brought in to the existing project size.



When you're done making any adjustments to the Import settings (rotation angle, etc.) click on IMPORT to finish bringing the Image sequence into TVPaint .

You can also activate the Import window by going to the File Menu > Open > Import which will open up your File Requester and allow you to search your file directory for the location of the image sequence you want to import . Then select the images and click LOAD. Then follow the same procedure as above .



*David Nethery*

Online Director of Traditional Animation